

GOODMAN GLOBAL GATEWAY +

嘉民國際訊通中心

Goodman



PREMIUM GRADE INDUSTRIAL WAREHOUSE 頂級設備 提升商機

KEY PROPERTY FEATURES:

- + High clearance warehouse of 19 ft and ancillary office space available
貨倉樓底特高，19呎及附設辦公室
- + 13 levels with direct vehicle ramp access for container trucks up to 45 ft (13.72 m)
首13樓層可供45呎貨櫃車經車道直達
- + Each unit is serviced by two cargo lifts
每個單位均設有2部載貨升降機供使用
- + 11 floors of cargo lift access warehouse with units from 12,140 sq ft
設載貨升降機直達的11樓層之可供出租單位面積由12,140平方呎起

1,211,500 SQ FT
總面積

168 YEUNG UK ROAD
TSUEN WAN
荃灣楊屋道168號



1.7KM

to Tsuen Wan MTR
至荃灣港鐵站



6.4KM

to Container Terminal
至貨櫃碼頭



31.7KM

to HK Int'l Airport
至香港國際機場



32.2KM

to Man Kam To
至文錦渡

LEASING ENQUIRY 租務查詢

Lisa Li
lisa.li@goodman.com
T 852 2249 3136

Taylor Tam
taylor.tam@goodman.com
T 852 2249 3123

goodman.com/hk



PLANS+

規劃

SITE PLAN 平面圖

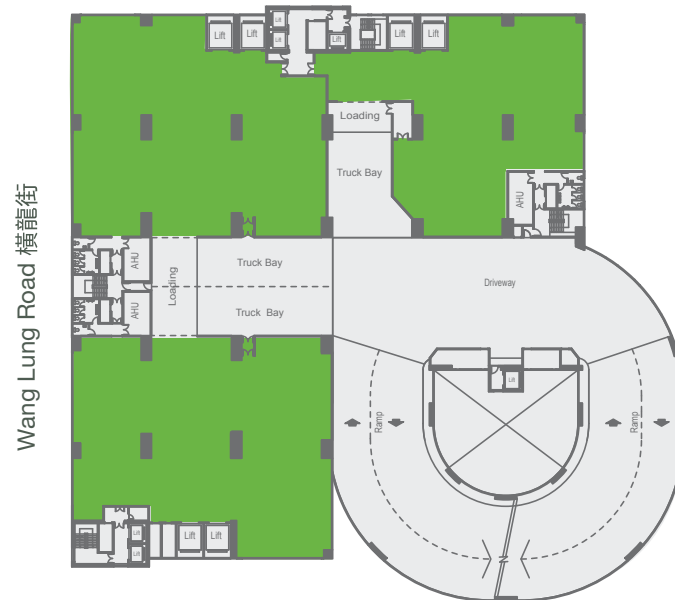
GOODMAN GLOBAL GATEWAY 嘉民國際訊通中心

DETAILS 倉庫資料

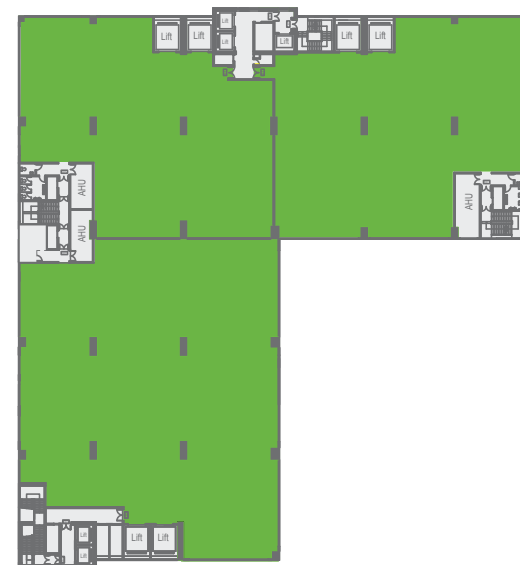
Floor plate (sq ft) 每層樓面面積 (平方呎)	12,140–58,569
Ceiling height (ft / m) 樓底高度 (呎 / 米)	16–19 / 4.79–5.82
Floor loading capacity (lbs / sq ft) 樓面負重量 (磅 / 平方呎)	250–300
No. of cargo lifts 載貨升降機	6 (2 per unit)
Cargo lift loading capacity (kg) 載貨升降機負重量 (公斤)	3,000



Yeung Uk Road 楊屋道



Floors 1–12 (ramp access)
1–12樓層 (可經車道直達)



Floors 13–25 (cargo lifts access)
13–25 樓層 (設載貨升降機樓層)

Disclaimer 免責聲明:

This document has been prepared by Goodman Asia Limited for general information purposes only. Whilst every care has been taken in relation to its accuracy, no warranty of accuracy is given or implied. Interested parties should obtain independent advice before making any decisions about the property referred to in this document. Images contained in this document have been used to enable the visualisation of the building concepts only. 本文件由Goodman Asia Limited ("Goodman") 製作, 內容僅供作一般參考之用。Goodman已竭力確保文件所提供之資料準確, 但對於資料之準確度, Goodman並不作任何承諾或保證。對本文件所提及之物業有興趣之人士, 須自行尋求獨立專業人士提供意見。而本文件所刊載之圖片, 只供作瞭解物業概念之用。