

GOODMAN TEXACO CENTRE +

嘉民德高中心

Goodman



AFFORDABLE FACILITY IN PREMIUM LOCATION

優越地段 經濟配套

KEY PROPERTY FEATURES:

- + Functional industrial facility with unit sizes available from 2,700 sq ft
工場單位面積由2,700平方呎起
- + Each floor is serviced by six cargo lifts and three passenger lifts
每層均連接6部載貨升降機及3部客用升降機
- + Loading and car parking facilities provided on G/F and 1/F
地面及一樓均設有完善上落貨區及泊車設施
- + Premium location with easy access to port, rail and arterial roads
頂級地理位置，鄰近貨櫃碼頭、鐵路及主幹道交匯點

427,000 SQ FT
總面積

126-140 TEXACO ROAD,
TSUEN WAN
荃灣德士古道126-140號



1.7KM

to Tsuen Wan MTR
至荃灣港鐵站



6.5KM

to Container Terminal
至貨櫃碼頭



31.7KM

to HK Int'l Airport
至香港國際機場



32.8KM

to Man Kam To
至文錦渡

LEASING ENQUIRY 租務查詢

Lisa Li
lisa.li@goodman.com
T 852 2249 3136

Taylor Tam
taylor.tam@goodman.com
T 852 2249 3123

goodman.com/hk



PLANS+

規劃

SITE PLAN 平面圖

GOODMAN TEXACO CENTRE 嘉民德高中心

DETAILS 倉庫資料

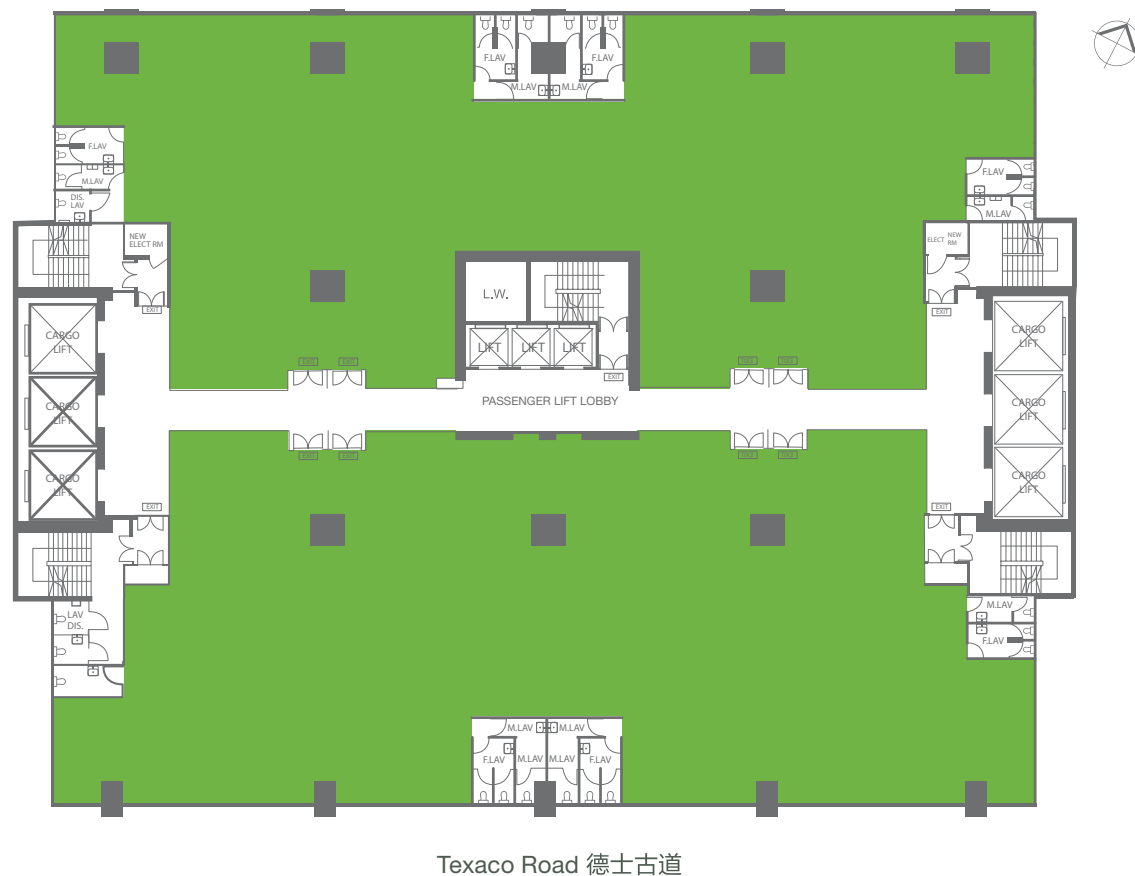
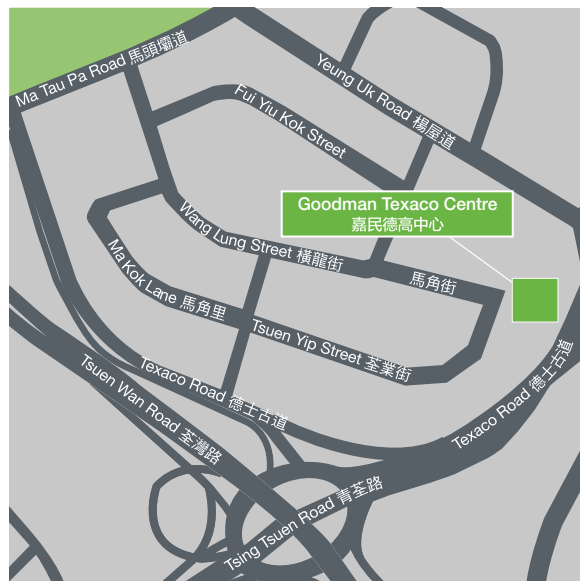
Floor plate (sq ft)
每層樓面面積 (平方呎) 2,700–33,000

Ceiling height (ft / m)
樓底高度 (呎 / 米) 10 / 3.00

Floor loading capacity (lbs / sq ft)
樓面負重量 (磅 / 平方呎) 150

No. of cargo lifts
載貨升降機 6

Cargo lift loading capacity (kg)
載貨升降機負重量 (公斤) 2,500



Disclaimer 免責聲明:

This document has been prepared by Goodman Asia Limited for general information purposes only. Whilst every care has been taken in relation to its accuracy, no warranty of accuracy is given or implied. Interested parties should obtain independent advice before making any decisions about the property referred to in this document. Images contained in this document have been used to enable the visualisation of the building concepts only. 本文件由Goodman Asia Limited ("Goodman") 製作, 內容僅供作一般參考之用。Goodman已竭力確保文件所提供之資料準確, 但對於資料之準確度, Goodman並不作任何承諾或保證。對本文件所提及之物業有興趣之人士, 須自行尋求獨立專業人士提供意見。而本文件所刊載之圖片, 只供作瞭解物業概念之用。