



# GOODMAN GLOBAL GATEWAY 嘉民國際訊通中心

Premium grade industrial warehouse  
頂級設備 提升商機

## KEY PROPERTY FEATURES:

High clearance warehouse of 19 ft and ancillary office space available  
貨倉樓底特高，19呎及附設辦公室

13 levels with direct vehicle ramp-access for container trucks up to 45 ft (13.72m)  
首13樓層可供45呎貨櫃車經車道直達

Each unit is serviced by two cargo lifts  
每個單位均設有2部載貨升降機供使用

11 floors of cargo lift-access warehouse with units from 12,140 sq ft  
設載貨升降機直達的11樓層之可供出租單位面積由12,140平方呎起



**14MIN**

walk to Tai Wo Hau MTR  
步行至大窩口港鐵站



**22MIN**

drive to HK International Airport  
行車至香港國際機場



**9MIN**

drive to Container Terminal  
行車至貨櫃碼頭



**37MIN**

drive to Man Kam To  
行車至文錦渡

# PLANS

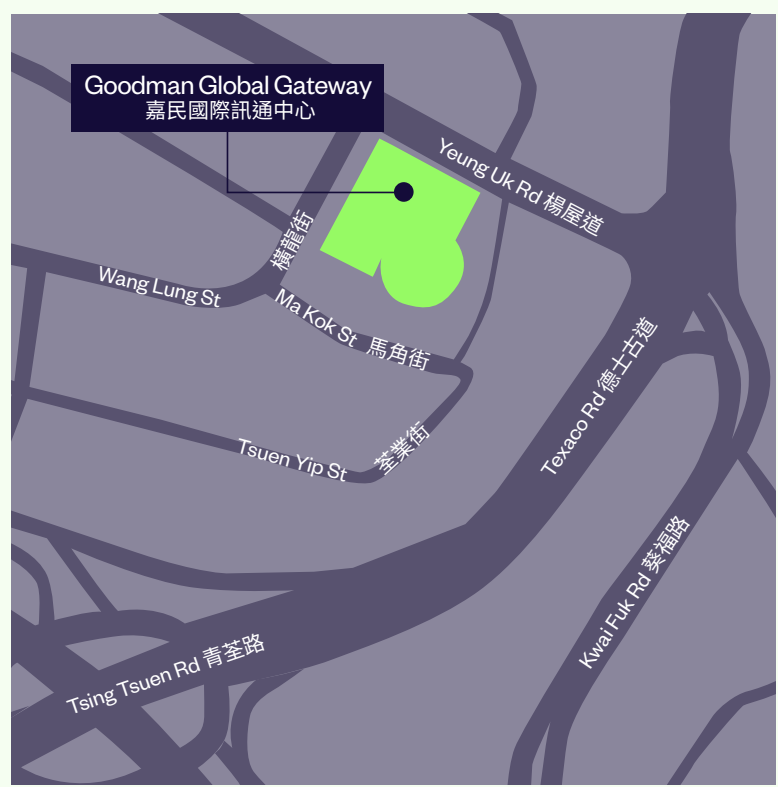
## 規劃

# 1,211,500 SQ FT

平方呎

Total Gross Area (sq ft)  
總建築面積 (平方呎)

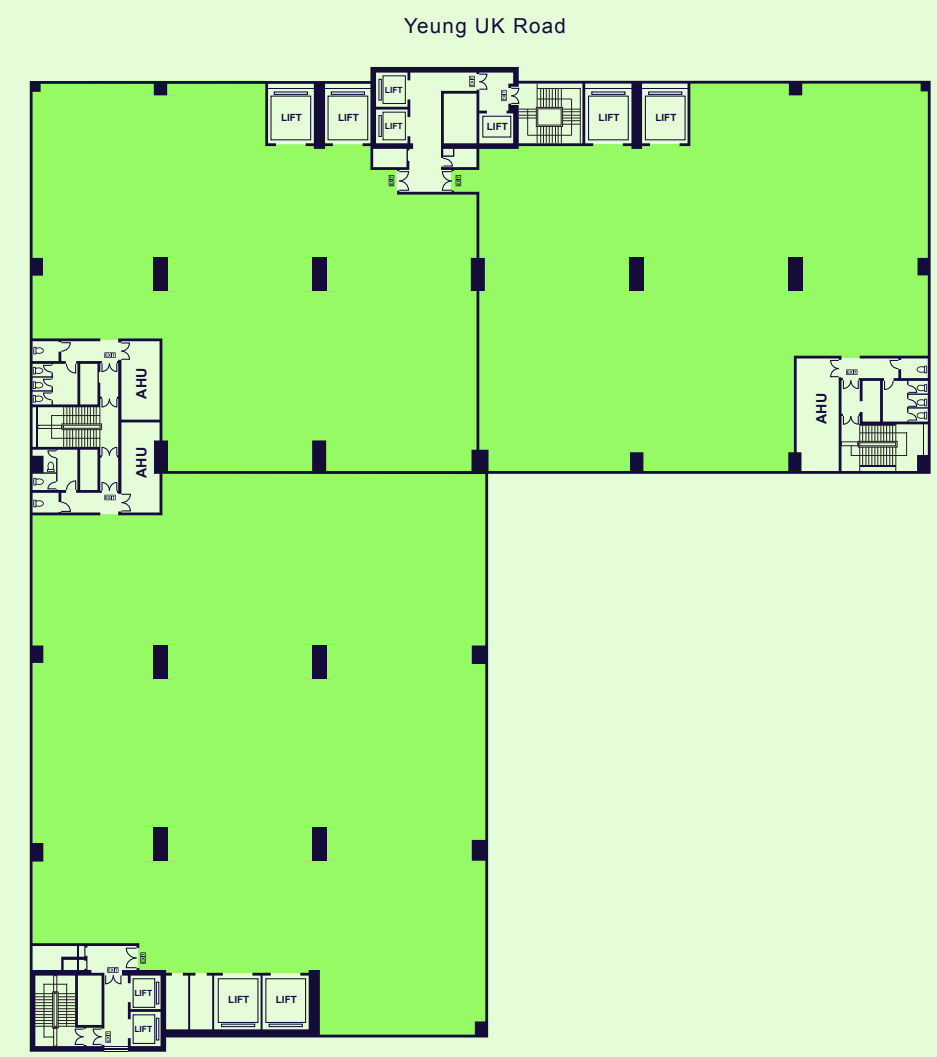
Floor plate (sq ft) 每層樓面面積 (平方呎)	12,140 - 58,569
Ceiling height (ft/m) 樓高 (呎/米)	16 - 19 / 4.79 - 5.82
Floor loading capacity (lbs/sq ft) 樓面負重量 (磅 / 平方呎)	250 - 300
No. of cargo lifts 載貨升降機	6 (2 per unit)
Cargo lift loading capacity (kg) 載貨升降機負重量 (公斤)	3,000



## Typical floor plan 平面圖



Floors 1-12 (ramp-access)  
1-12樓層 (可經車道直達)



Floors 13-25 (cargo lift-access)  
13-25樓層 (設載貨升降機樓層)

### Disclaimer 免責聲明:

This document has been prepared by Goodman Asia Limited for general information purposes only. Whilst every care has been taken in relation to its accuracy, no warranty of accuracy is given or implied. Interested parties should obtain independent advice before making any decisions about the property referred to in this document. Images contained in this document have been used to enable the visualisation of the building concepts only.

本文件由Goodman Asia Limited ("Goodman")製作，內容僅供作一般參考之用。Goodman已竭力確保文件所提供之資料準確，但對於資料之準確度，Goodman並不作任何承諾或保證。對本文件所提及之物業有興趣之人士，須自行尋求獨立專業人士提供意見。而本文件所刊載之圖片，只供作瞭解物業概念之用。

Leasing hotline  
租務熱線

**2249 3188**  
leasing.hk@goodman.com

goodman.com/hk

