



# GOODMAN INTERLINK

## 嘉民領達中心

Premium grade industrial warehouse  
頂級設備 提升商機

### KEY PROPERTY FEATURES:

High clearance warehouse up to approximately 21 ft  
倉庫樓底高度達21呎

15 levels with direct vehicle ramp-access for container vehicles up to 45 ft  
首15樓層可供45呎貨櫃車經車道直達

Seven levels of cargo lift-access warehouse  
7層出租單位設有載貨升降機

Immediately adjacent to Container Terminal 9 and Stonecutters Bridge  
毗鄰為9號貨櫃碼頭和昂船洲大橋，方便往來港口、機場和中國大陸邊境



5MIN

drive to Container Terminal 9  
行車至9號貨櫃碼頭



21MIN

drive to HK International Airport  
行車至香港國際機場



10MIN

drive to Tsing Yi MTR  
行車至青衣港鐵站



36MIN

drive to Man Kam To  
行車至文錦渡



# PLANS

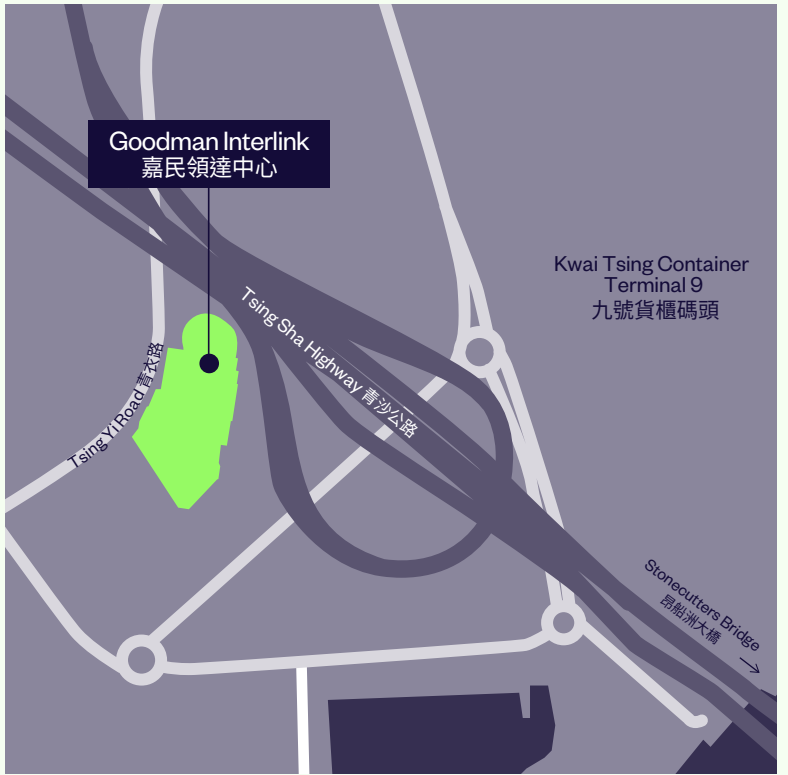
## 規劃

# 2,423,800 SQ FT

平方呎

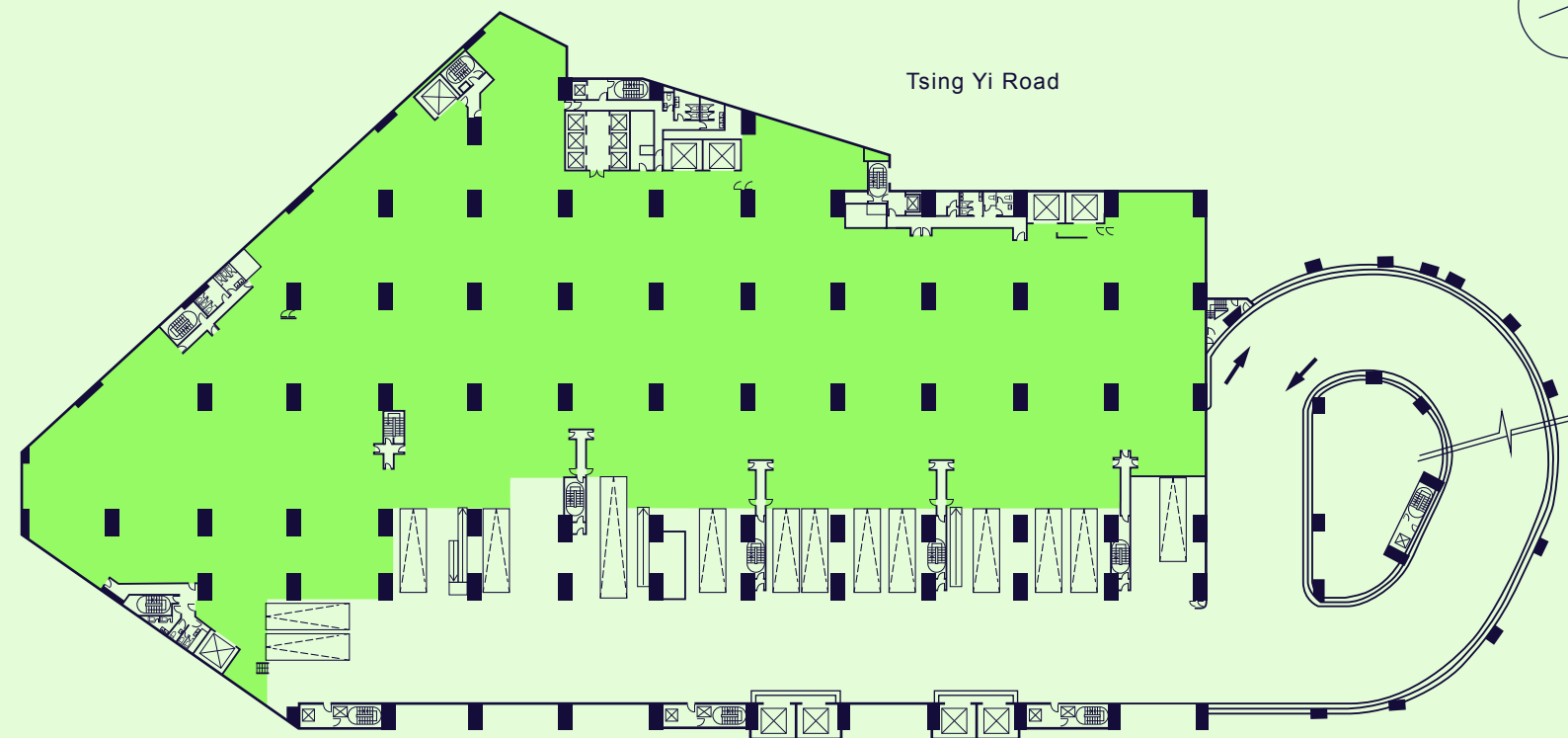
Total Gross Area (sq ft)  
總建築面積 (平方呎)

Floor plate (sq ft) 每層樓面面積 (平方呎)	82,524 - 137,525
Ceiling height (ft/m) 樓高 (呎/米)	18 - 21 / 5.48 - 6.50
Floor loading capacity (lbs/sq ft) 樓面負重量 (磅 / 平方呎)	310 - 365
No. of cargo lifts 載貨升降機	10
Cargo lift loading capacity (kg) 載貨升降機負重量 (公斤)	5,000

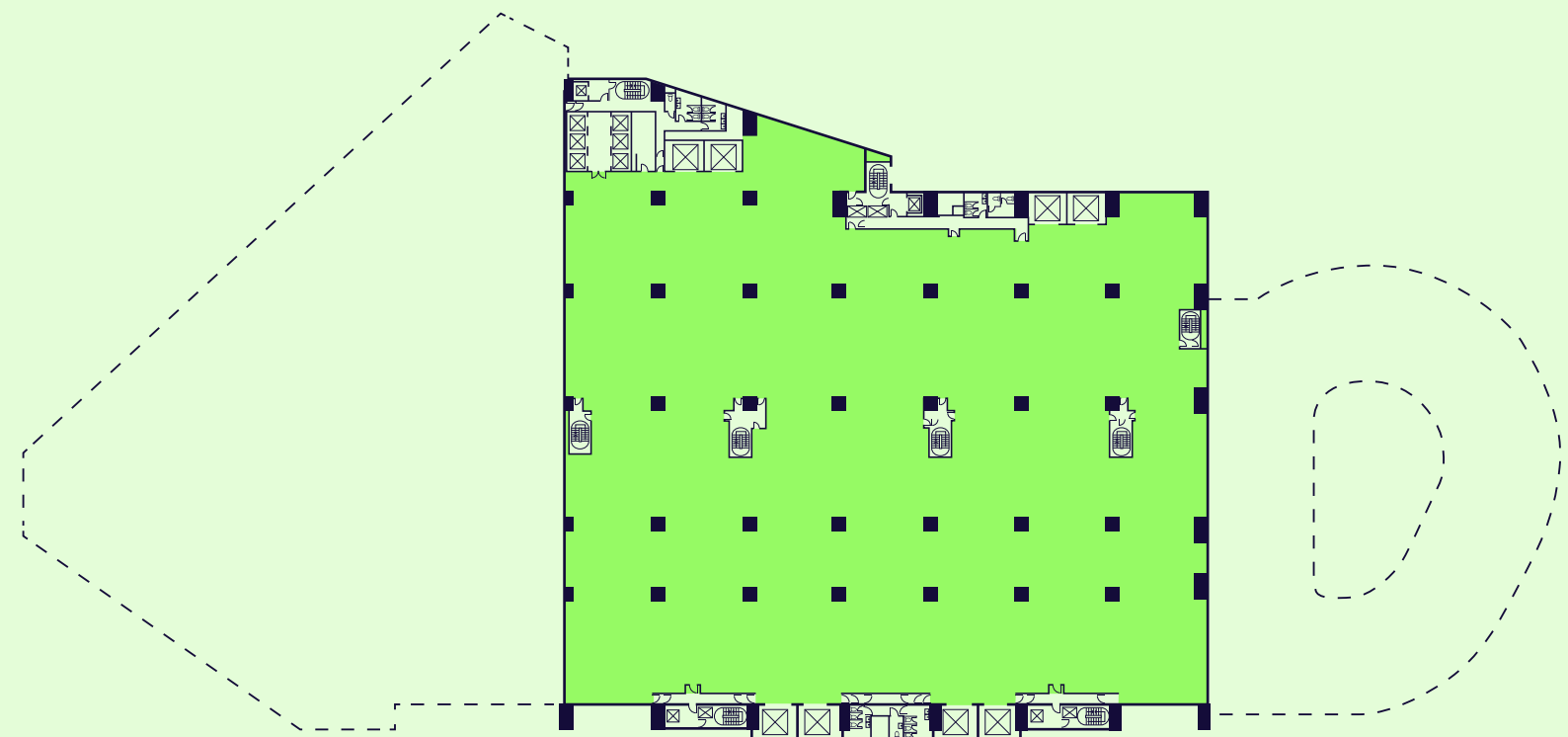


## Typical floor plan 平面圖

Floors 1-15 (ramp-access)  
1-15樓層 (可經車道直達)



Floors 17-22 (cargo lift-access)  
17-22樓層 (設載貨升降機樓層)



### Disclaimer 免責聲明:

This document has been prepared by Goodman Asia Limited for general information purposes only. Whilst every care has been taken in relation to its accuracy, no warranty of accuracy is given or implied. Interested parties should obtain independent advice before making any decisions about the property referred to in this document. Images contained in this document have been used to enable the visualisation of the building concepts only.

本文件由Goodman Asia Limited (“Goodman”)製作，內容僅供作一般參考之用。Goodman已竭力確保文件所提供之資料準確，但對於資料之準確度，Goodman並不作任何承諾或保證。對本文件所提及之物業有興趣之人士，須自行尋求獨立專業人士提供意見。而本文件所刊載之圖片，只供作瞭解物業概念之用。

Leasing hotline  
租務熱線

**2249 3188**  
[leasing.hk@goodman.com](mailto:leasing.hk@goodman.com)

[goodman.com/hk](http://goodman.com/hk)

