



GOODMAN SHATIN LOGISTICS CENTRE 嘉民沙田物流中心

Fully equipped and accessible warehouse
配套完善 交通便捷

KEY PROPERTY FEATURES:

Warehouse building with flexible floor plates
每層倉庫可靈活分間單位

11 cargo lifts and two passenger lifts
設11部載貨升降機及2部客用升降機

Functional loading and unloading spaces over two floors
備有貨物起卸台於兩樓層，供貨車及貨櫃車使用

Close proximity to Fo Tan station and great connectivity to major business districts via Tolo Highway
鄰近港鐵火炭站，經吐露港公路直達各主要商業區



14MIN

walk to Fo Tan MTR
步行至火炭港鐵站



30MIN

drive to Man Kam To
行車至文錦渡



19MIN

drive to Container Terminal
行車至貨櫃碼頭



34MIN

drive to HK International Airport
行車至香港國際機場



MAKING SPACE FOR GREATNESS

SHATIN 沙田

6 WONG CHUK YEUNG STREET, FOTAN

火炭黃竹洋街6號

PLANS

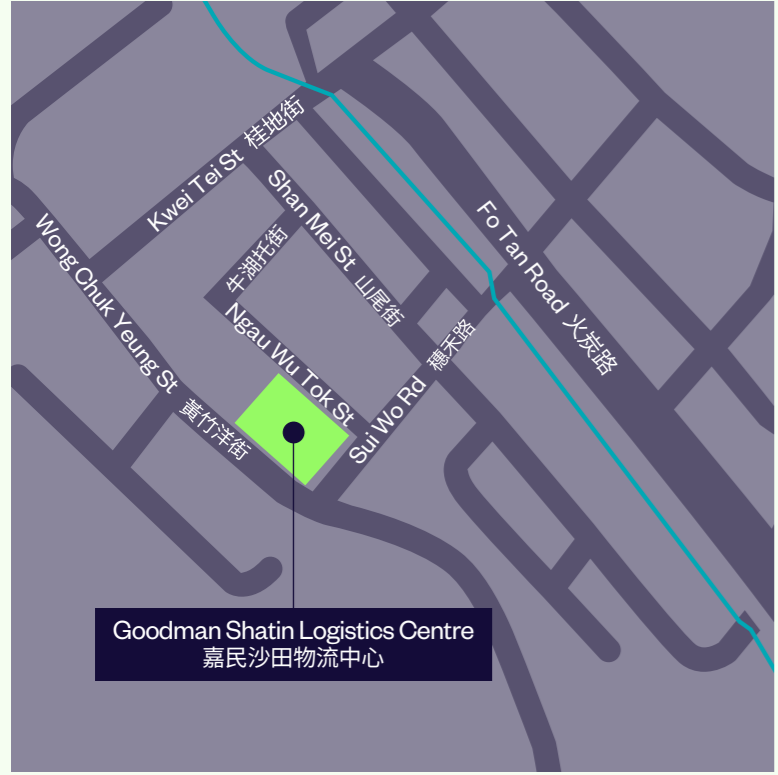
規劃

308,900 SQ FT

平方呎

Total Gross Area (sq ft)
總建築面積 (平方呎)

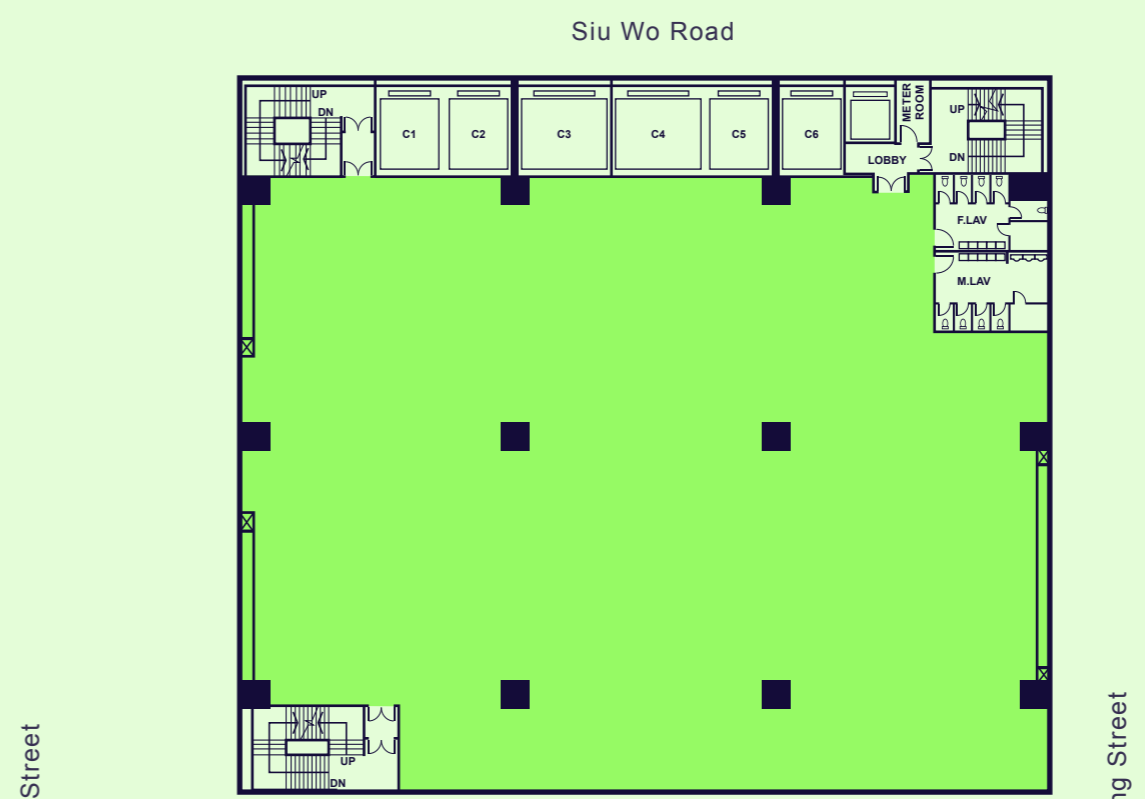
Floor plate (sq ft) 每層樓面面積 (平方呎)	4,100-15,510
Ceiling height (ft/m) 樓高 (呎/米)	14-15 / 4.46-4.64
Floor loading capacity (lbs/sq ft) 樓面負重量 (磅 / 平方呎)	300
No. of cargo lifts 載貨升降機	11
Cargo lift loading capacity (kg) 載貨升降機負重量 (公斤)	2,500-5,000



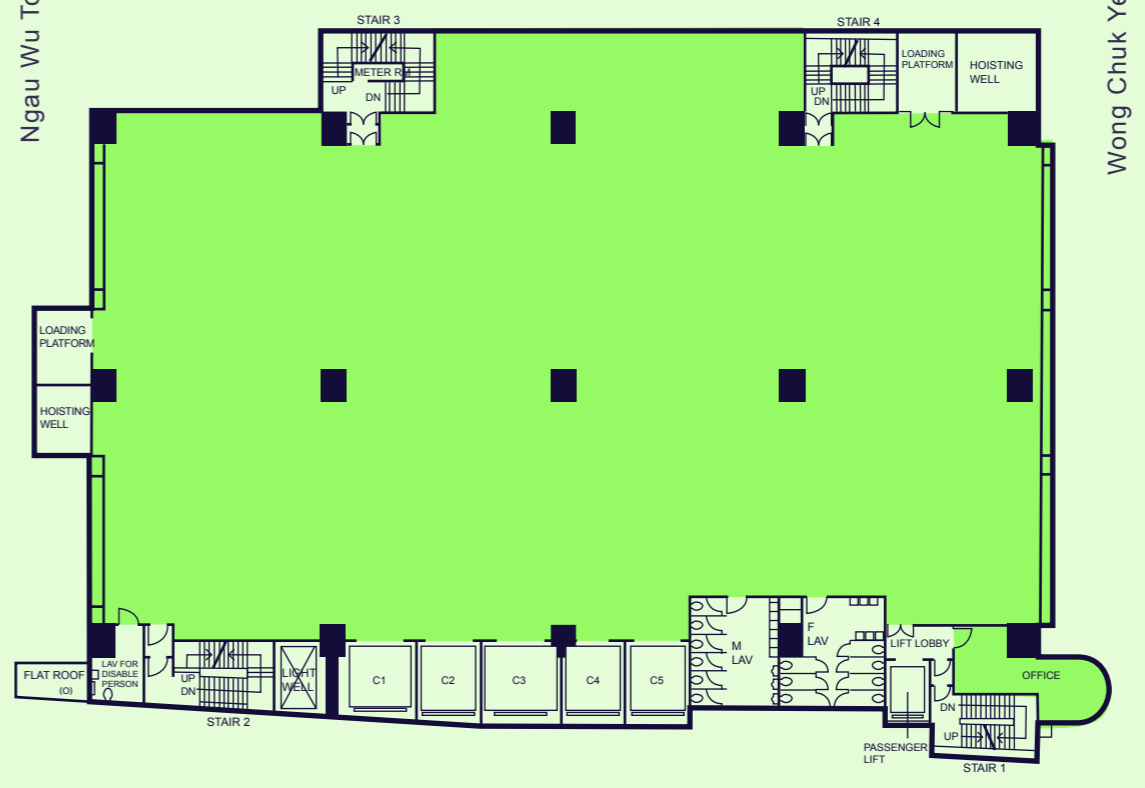
Goodman Shatin Logistics Centre
嘉民沙田物流中心

Typical floor plan 平面圖

Phase 2
二座



Phase 1
一座



Disclaimer 免責聲明:

This document has been prepared by Goodman Asia Limited for general information purposes only. Whilst every care has been taken in relation to its accuracy, no warranty of accuracy is given or implied. Interested parties should obtain independent advice before making any decisions about the property referred to in this document. Images contained in this document have been used to enable the visualisation of the building concepts only.

本文件由Goodman Asia Limited (“Goodman”)製作，內容僅供作一般參考之用。Goodman已竭力確保文件所提供之資料準確，但對於資料之準確度，Goodman並不作任何承諾或保證。對本文件所提及之物業有興趣之人士，須自行尋求獨立專業人士提供意見。而本文件所刊載之圖片，只供作瞭解物業概念之用。

Leasing hotline
租務熱線

2249 3188
leasing.hk@goodman.com

goodman.com/hk

