



# GOODMAN TEXACO CENTRE

## 嘉民德高中心

Affordable facility in premium location  
優越地段 經濟配套

### KEY PROPERTY FEATURES:

Functional industrial facility with unit sizes available from 2,700 sq ft  
工場單位面積由2,700平方呎起

Each floor is serviced by six cargo lifts and three passenger lifts  
每層均連接6部載貨升降機及3部客用升降機

Loading and car parking facilities provided on G/F and 1/F  
地面及一樓均設有完善上落貨區及泊車設施

Premium location with easy access to port, rail and arterial roads  
頂級地理位置，鄰近貨櫃碼頭、鐵路及主幹道交匯點



**14MIN**

walk to Tai Wo Hau MTR  
步行至大窩口港鐵站



**22MIN**

drive to HK International Airport  
行車至香港國際機場



**9MIN**

drive to Container Terminal  
行車至貨櫃碼頭



**36MIN**

drive to Man Kam To  
行車至文錦渡

# PLANS

## 規劃

# 427,000 SQ FT

平方呎

Total Gross Area (sq ft)  
總建築面積 (平方呎)

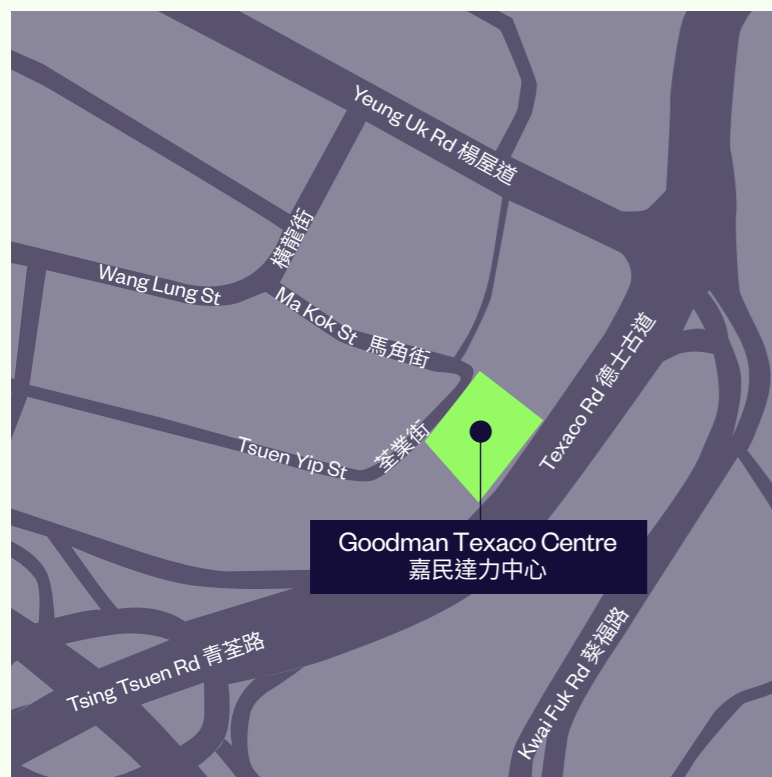
Floor plate (sq ft)  
每層樓面面積 (平方呎) 2,700-33,000

Ceiling height (ft/m)  
樓高 (呎/米) 10 / 3.00

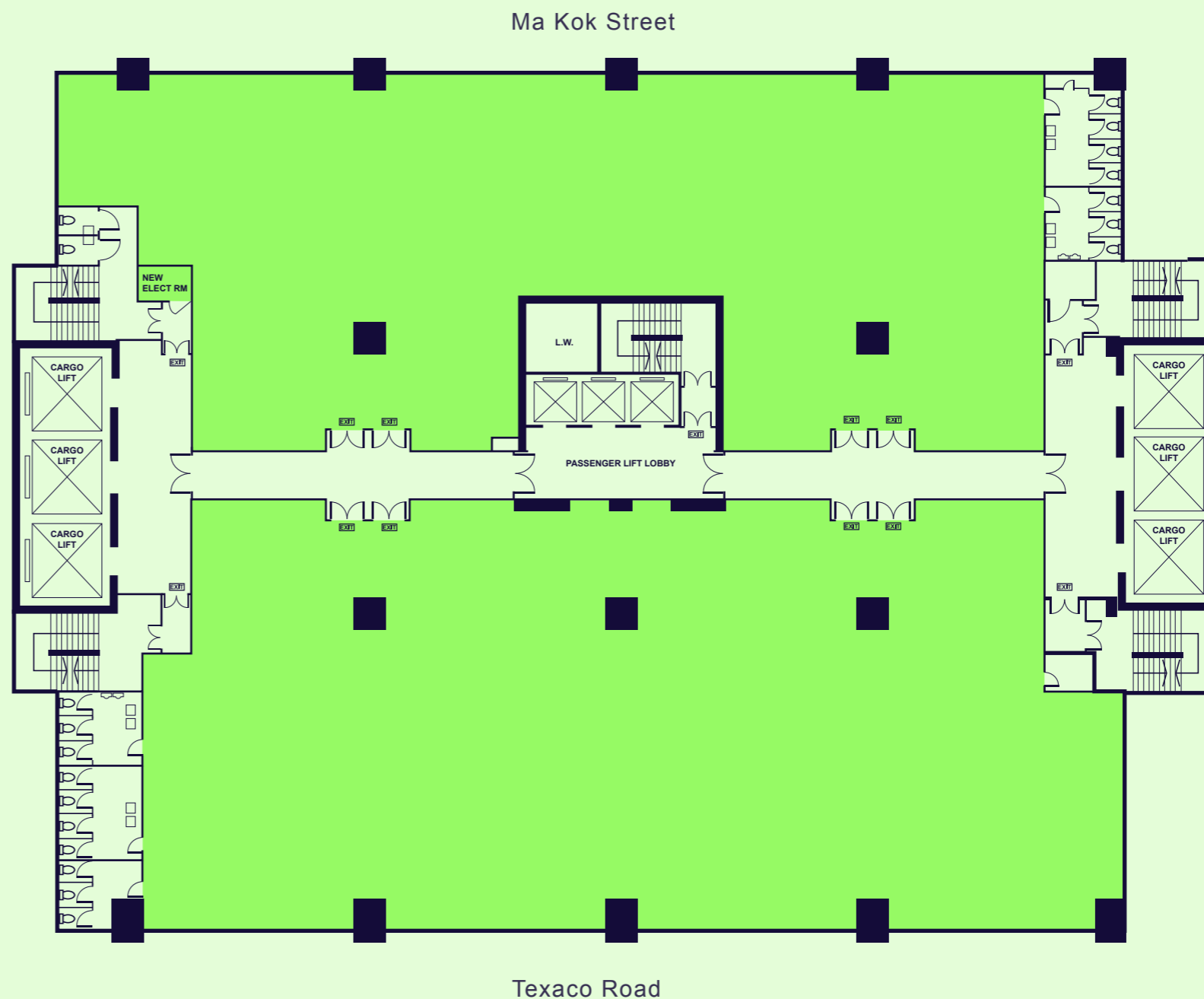
Floor loading capacity (lbs/sq ft)  
樓面負重量 (磅 / 平方呎) 150

No. of cargo lifts  
載貨升降機 6

Cargo lift loading capacity (kg)  
載貨升降機負重量 (公斤) 2,500



## Typical floor plan 平面圖



### Disclaimer 免責聲明:

This document has been prepared by Goodman Asia Limited for general information purposes only. Whilst every care has been taken in relation to its accuracy, no warranty of accuracy is given or implied. Interested parties should obtain independent advice before making any decisions about the property referred to in this document. Images contained in this document have been used to enable the visualisation of the building concepts only.

本文件由Goodman Asia Limited ("Goodman")製作，內容僅供作一般參考之用。Goodman已竭力確保文件所提供之資料準確，但對於資料之準確度，Goodman並不作任何承諾或保證。對本文件所提及之物業有興趣之人士，須自行尋求獨立專業人士提供意見。而本文件所刊載之圖片，只供作瞭解物業概念之用。

Leasing hotline  
租務熱線

2249 3188

leasing.hk@goodman.com

goodman.com/hk

